

Ashtons



Weald House Birch Close Huntington YO31 9PR

£1,100 Per Month

2



1



1



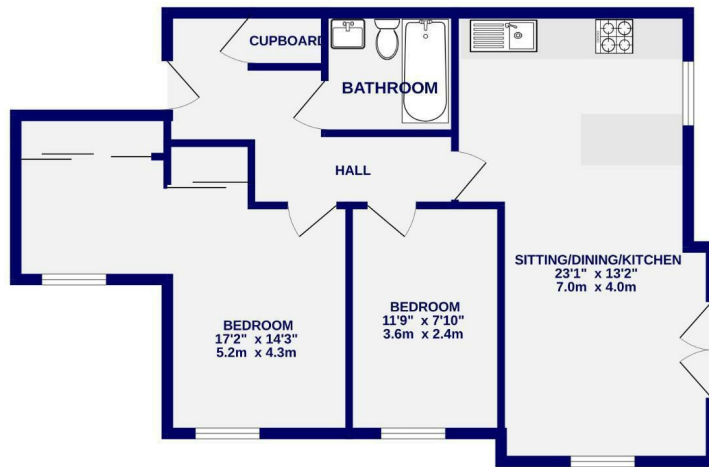
C



A well presented and spacious second floor two bedroom apartment, well located for access to the city centre, Huntingdon and the outer ring road. Offered on a part furnished basis the apartment comprises entrance hallway containing utility cupboard housing washing machine, open plan living/kitchen with appliances including fridge, electric oven, hob, dishwasher, one large double bedroom with built in wardrobes, second smaller double bedroom with fitted wardrobe (no bed in this bedroom) and a modern bathroom with shower over bath. Electric heating. Allocated parking space.

Available 8th September

Deposit £1050 / EPC Rating C / Council Tax Band B / Initial 9 or 12 month tenancy



TOTAL FLOOR AREA: 673 sq. ft. (62.5 sq. m.) approx.
While every attempt has been made to ensure the accuracy of the floorplan, measurements of rooms and any other items are approximate. It is not to be used as a basis for any legal proceedings. This plan is for illustrative purposes only and should be used as such by any prospective purchaser. The services, systems and appliances shown have not been tested and no guarantee as to their operability.
Made with Metrege G2024



Ashtons Lettings

01904 731404

lettings@ashtonsnet.com

